

ProXpress (Mouse IgG-Fc) Rapid Test Card Manual

Cat. No.: HX002326-5

Unit size: 5

Expected Use

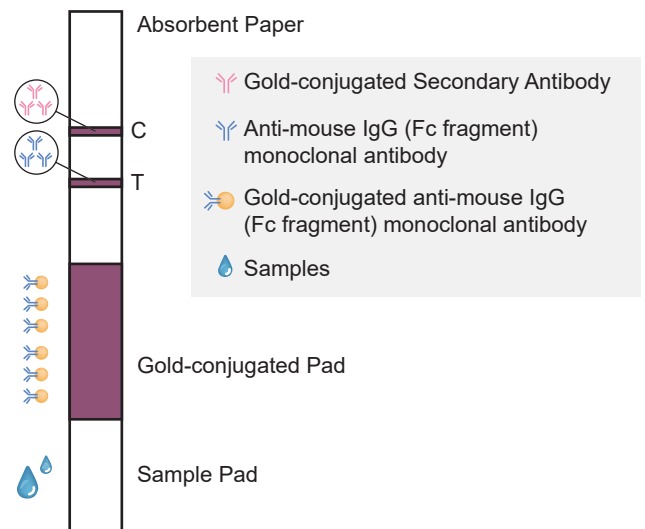
Rapidly detects Mouse IgG antibodies (or recombinant protein products with mouse Fc fragments) obtained from eukaryotic expression systems.

Detection Principle

This product is a semi-quantitative protein detection reagent that relies on the use of a colloidal gold-based lateral flow assay. The foundation of this product is comprised of various components, such as a sample pad, a gold-conjugated pad, a chromatography membrane, and absorbent paper.

When administering the assay, users will add a drop of the test sample onto the sample pad, which then undergoes chromatography via capillary effects. When mouse IgG antibody (Fc fragment) is present in the sample, anti-mouse IgG (Fc fragment) monoclonal antibody will bind solely to it.

As the complex laminar flow moves towards the T line, it is captured by another strain of immobilized gold-conjugated anti-mouse IgG (Fc fragment) monoclonal antibody, forming a purplish-red band. Moving onto the control line (C line), it is captured by the immobilized gold-conjugated secondary antibody, forming a purplish-red band.



Schematic Diagram of the Test Principle

Package Contents

1. Mouse IgG-Fc rapid test cards
2. ProXpress dilution buffer
3. Instructions

Storage & Validity

Stored in a cool place, 4~30°C, do not freeze, avoid direct sunlight. Valid for 12 months.

Instructions

1. Begin by letting the test card equilibrate to room temperature before conducting any further steps. This is crucial to ensure accurate results.
2. Draw 20 µl of the pre-diluted test sample using a micropipette and dispense it into the sample well.
3. Next, add 50 µl of ProXpress dilution buffer to the sample well. You can accomplish this by gently adding two drops vertically from the dropper.
4. After completing the previous steps, read the results after 10-15 minutes.

Overall, ensure to follow the steps above to obtain reliable and accurate results.

Product Performance Indicators

The test strip has a minimum detection limit of 0.04 µg/mL. In cases where the mouse IgG (Fc) concentration is within the range of 0.04 µg/mL to 1 µg/mL, the color depth of the T line displays a positive correlation with the protein concentration. As the protein concentration increases within this range, the T line's color appears deeper.

Results Interpretation

1. **Negative results:** Color development of the C line no observable color on the T line.
2. **Positive results:** The color development of both the C and T lines.

Note: when the sample contains mouse IgG (Fc), the T line color is gradually enhances, with the increase of mouse IgG (Fc).

3. **Invalid result:** No color is observable on the C line, regardless of the presence of color on the T line. This indicates an ineffective reagent, rendering the test invalid.

ProXpress (Mouse IgG-Fc)



Test card color rendering display diagram

Troubleshooting

Observation	Possible Cause	Recommended Action
Low intensity at the control line	Interfering substances in the sample	Repeat the test after diluting 10 times with ProXpress dilution buffer.
Test failure	Reagent failure	Check expiration date.

About Us

Synbio Technologies is a leading biotech company dedicated to transforming biology into technology. We are committed to enabling advancements in life science research, bio-manufacturing, health, and agriculture through our premier synthetic biology platform. Our core competencies involve gene synthesis, molecular biology, genomics, protein engineering, and phage display. Synbio Technologies is at the forefront of biotechnology, providing comprehensive, multi-level, and industrialized DNA services to scientists all over the world. For more information, please visit www.synbio-tech.com.



DNA WRITING



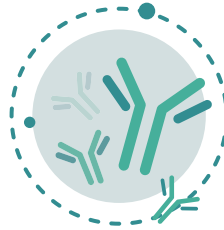
DNA READING



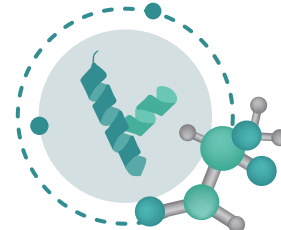
DNA EDITING



SYNTHETIC BIOLOGY



ANTIBODY DISCOVERY



PROTEINS & PEPTIDES

21 August 2023